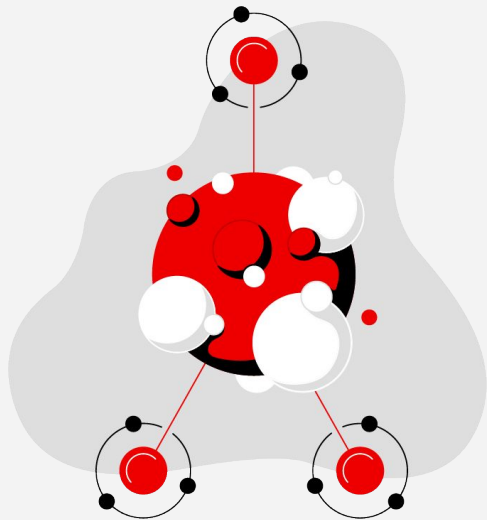




Navigating Innovation with Open Hybrid Cloud and Openshift AI

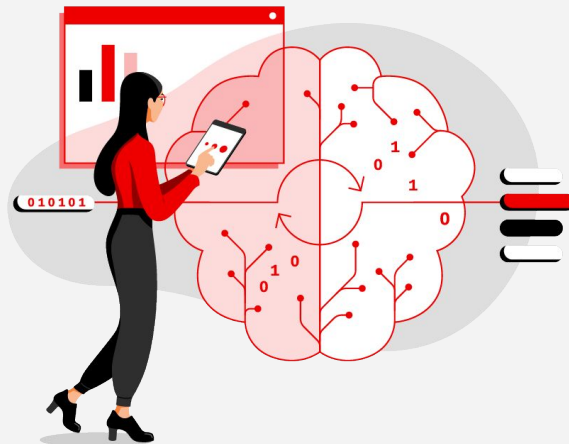
GIDS 2024

Tuhin Sharma
Senior Principal Data Scientist

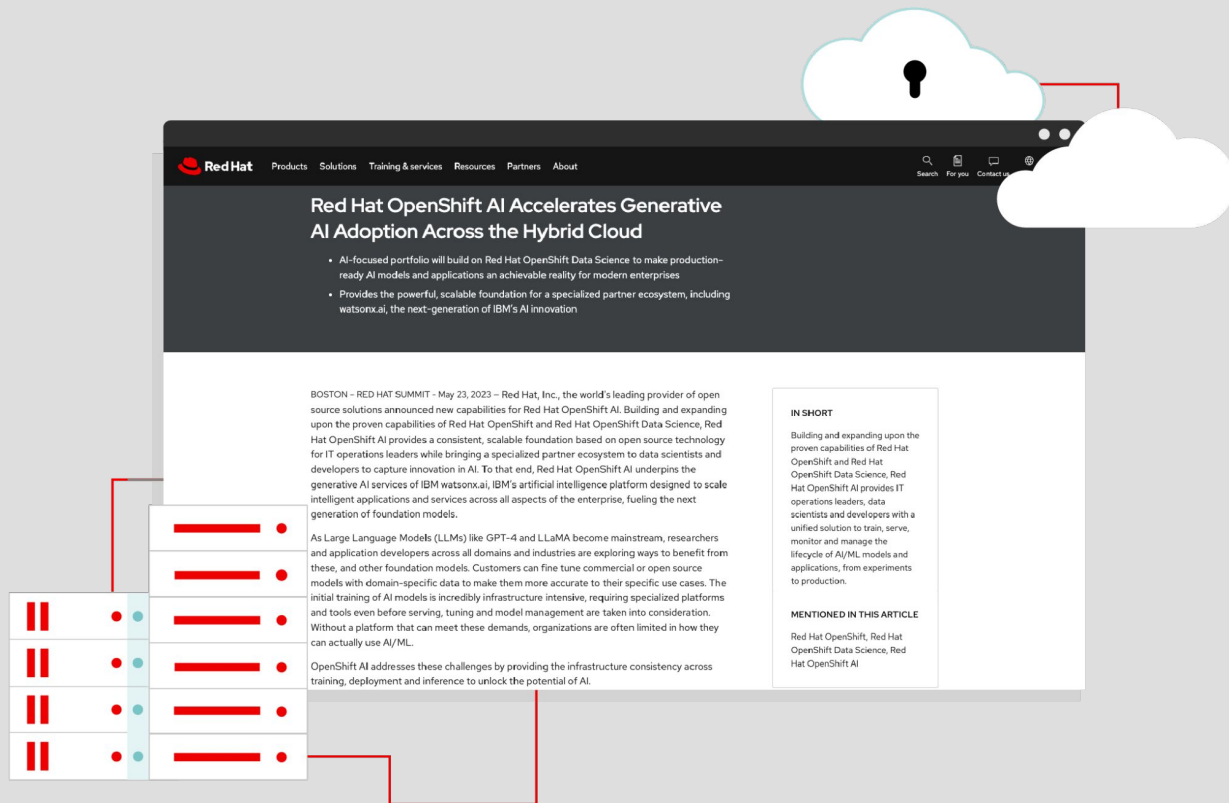


open source

&



AI



Rise of Generative AI



80%

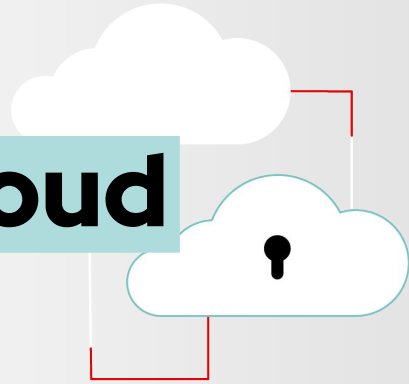
of Enterprises will have
deployed **Generative**
AI-Enabled Applications
by 2026

Source: [Gartner](#)



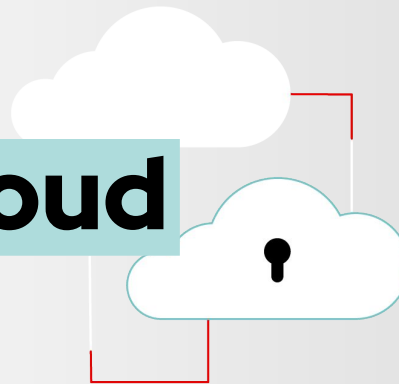
AI needs

hybrid cloud

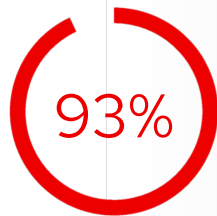




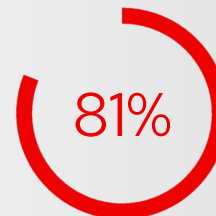
AI needs **hybrid cloud**



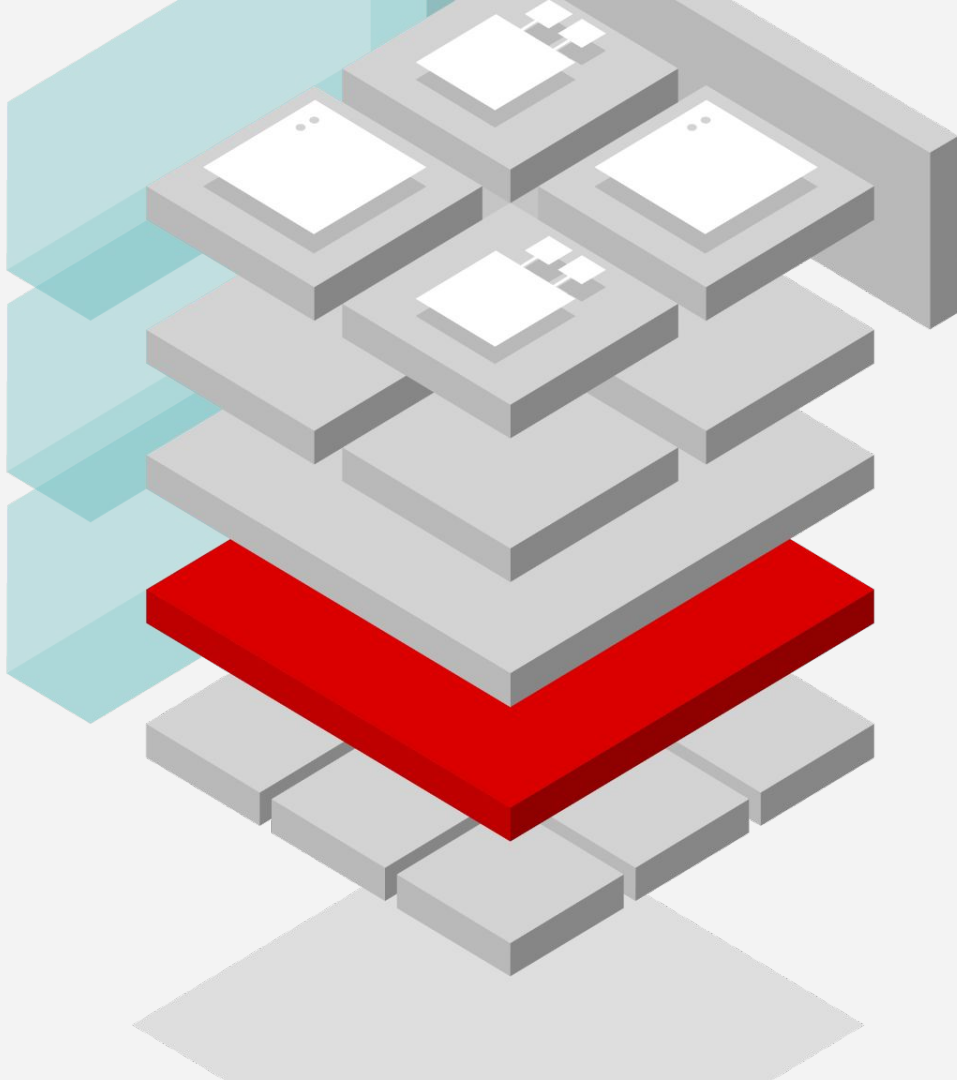
IDC Survey of 200 US-based \$1B companies



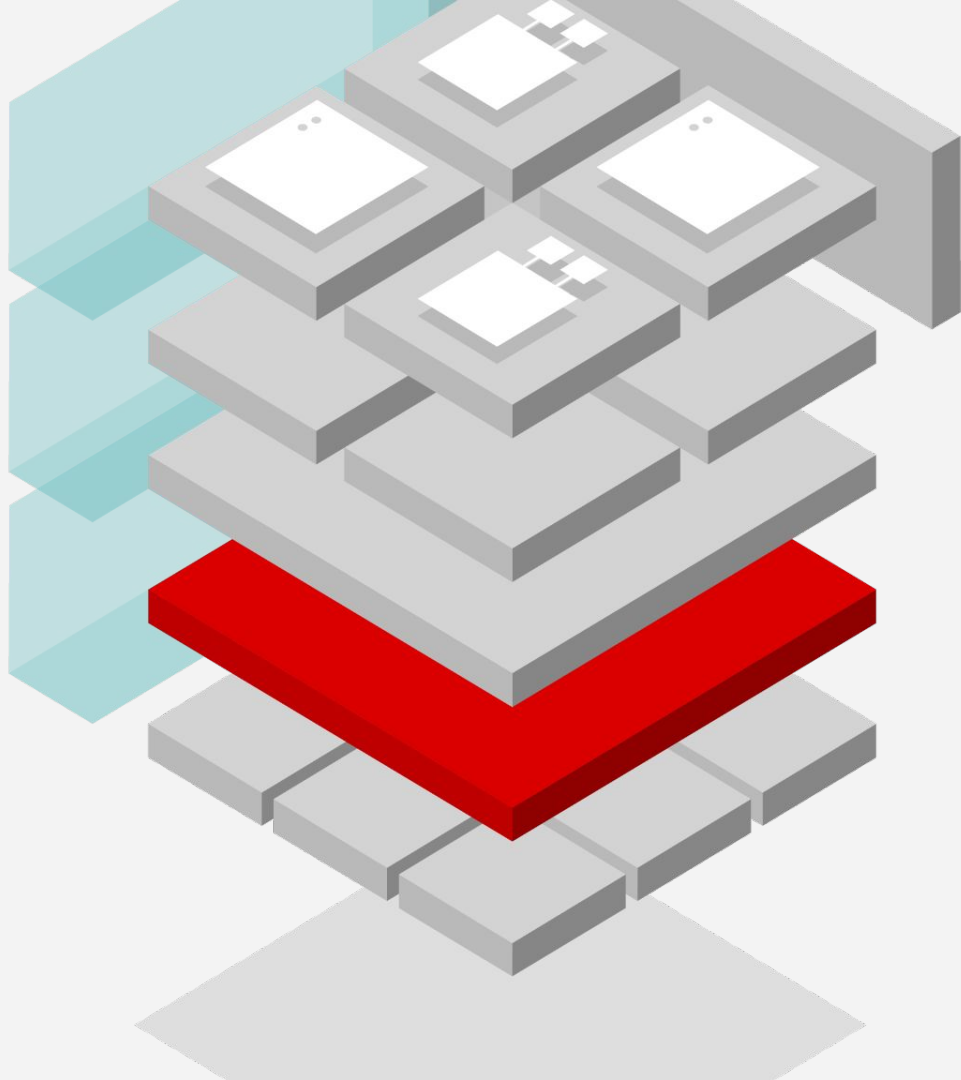
Using multiple
infrastructure clouds*



Using multiple public clouds and
one or more private/dedicated clouds*



Red Hat
Enterprise Linux



Red Hat
Enterprise Linux



Linux runs of the
public cloud workloads

Kubernetes and OpenShift





open source

cloud computing
and automation

**artificial
intelligence** and
machine learning

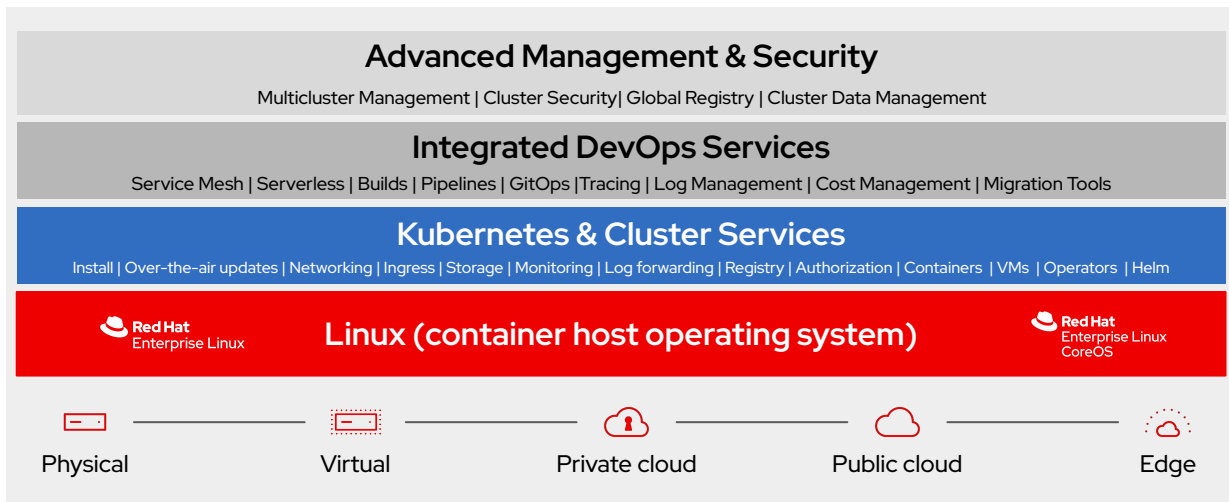


Self-Managed Platforms

 **Red Hat**
OpenShift
Platform Plus

 **Red Hat**
OpenShift
Container Platform

 **Red Hat**
OpenShift
Kubernetes Engine



OpenShift Cloud Services



Red Hat
OpenShift
Service on
AWS



Azure Red
Hat
OpenShift



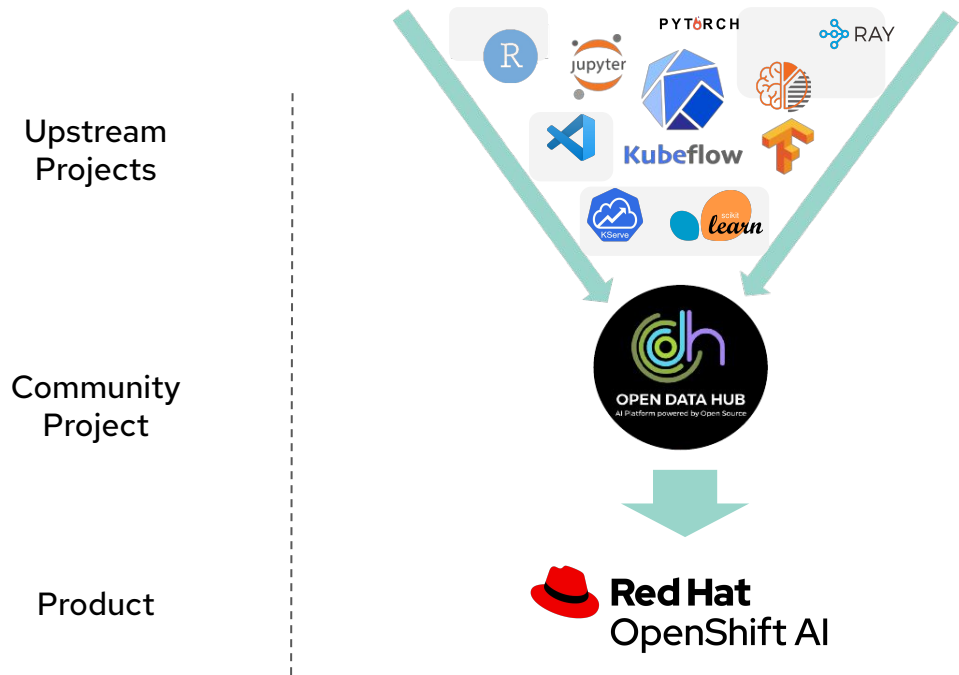
Google Cloud

OpenShift
Dedicated



Red Hat
OpenShift on
IBM Cloud

Bringing AI/ML open source to the enterprise





Red Hat OpenShift AI

Hybrid MLOps platform

Collaborate within a common platform to bring IT, data science, and app dev teams together

Available as

- managed cloud service
- traditional software product on-site or in the cloud!



Model development

Conduct exploratory data science in JupyterLab with access to core AI / ML libraries and frameworks including TensorFlow and PyTorch using our notebook images or your own.



Model serving & monitoring

Deploy models across any cloud, fully managed, and self-managed OpenShift footprint and centrally monitor their performance.



Lifecycle Management

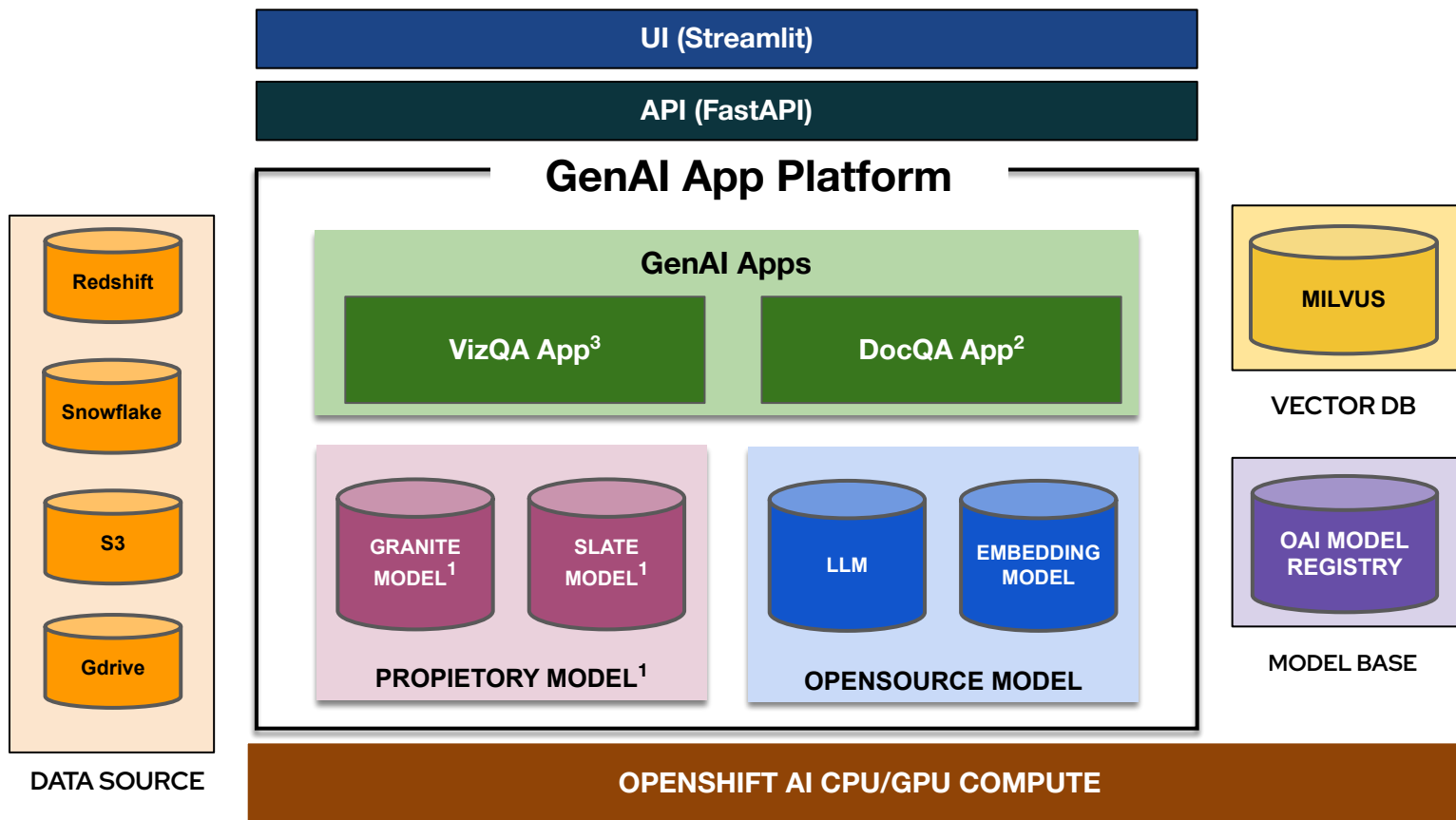
Create repeatable data science pipelines for model training and validation and integrate them with devops pipelines for delivery of models across your enterprise.



Increased capabilities / collaboration

Create projects and share them across teams. Combine Red Hat components, open source software, and ISV certified software.

GenAI Reference Architecture



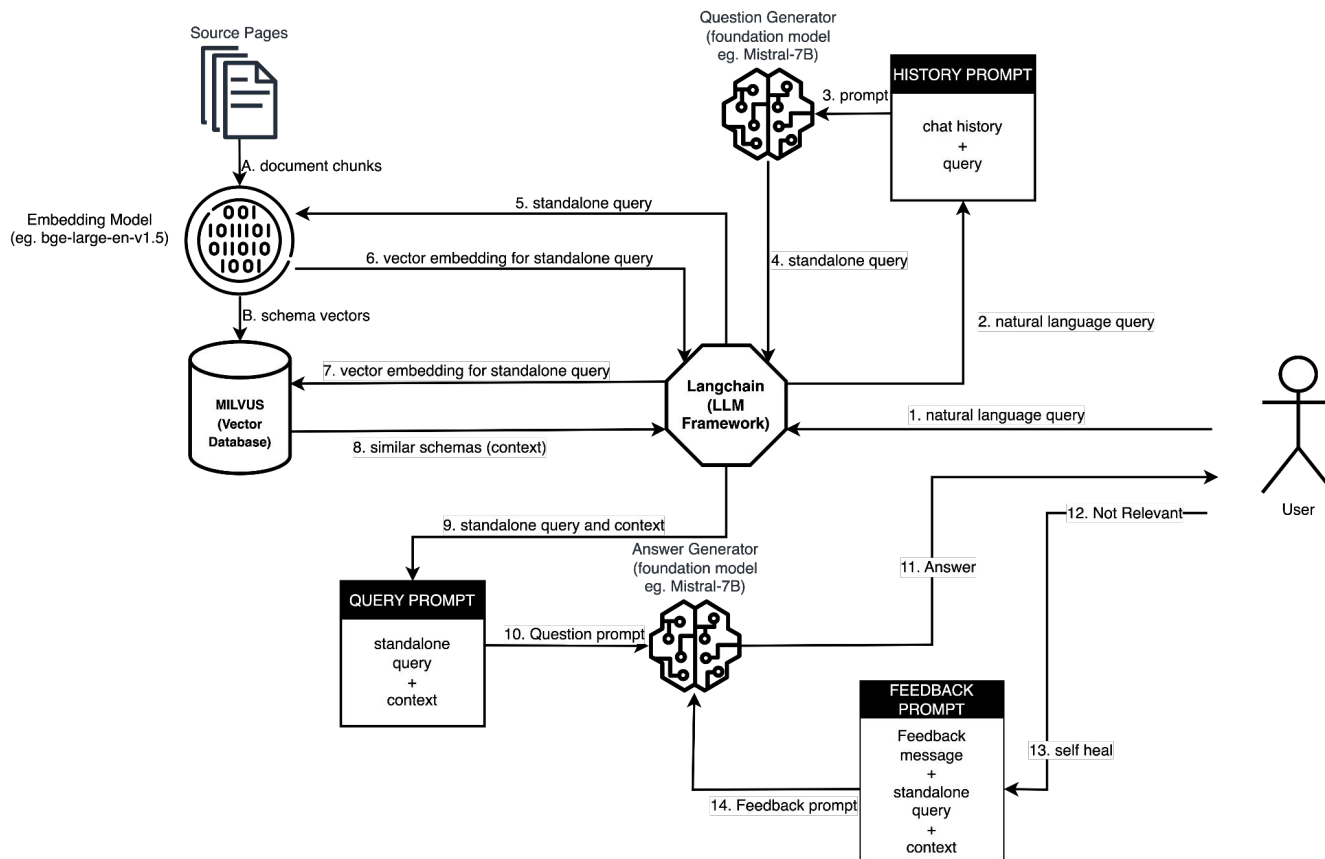
¹ <https://www.ibm.com/downloads/cas/X9W4O6BM>

² https://huggingface.co/docs/transformers/main/tasks/document_question_answering

³ https://huggingface.co/docs/transformers/main/tasks/visual_question_answering



GenAI Reference Workflow for DocQA App



Recap & Next steps



Sign up at developers.redhat.com
Find out more about Red Hat's project and products, and what it offers developers



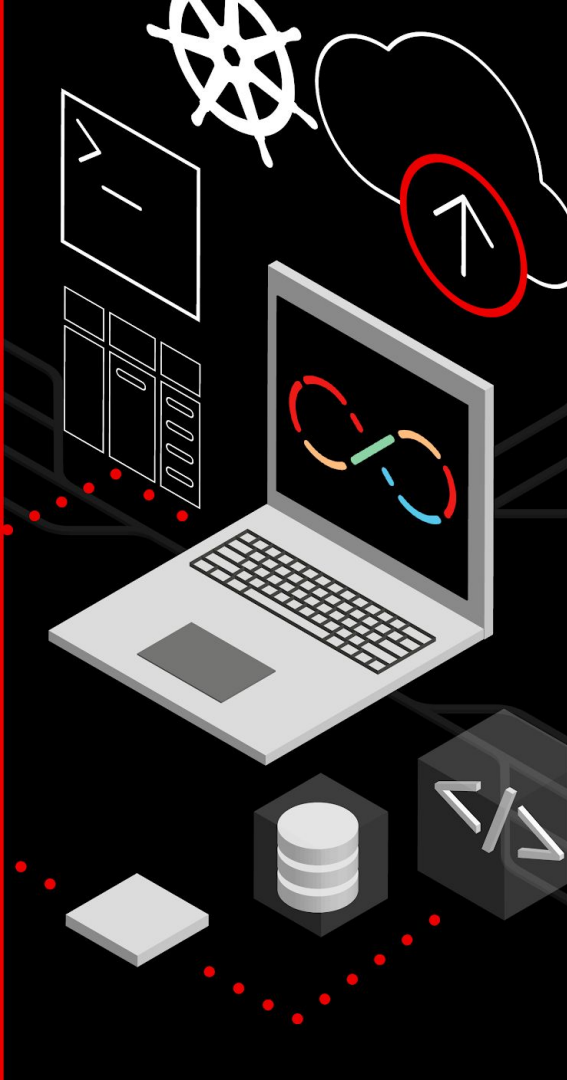
Learn more about [OpenShift AI](#)

[Developer Sandbox for OpenShift](#)

Start your OpenShift experience for free in four simple steps

[OpenShift AI Sandbox](#)

Start your OpenShift AI experience for free



Thank you!



[linkedin.com/showcase/red-hat-developer](https://www.linkedin.com/showcase/red-hat-developer)



facebook.com/RedHatDeveloper



youtube.com/RedHatDevelopers



twitter.com/rhdevelopers

